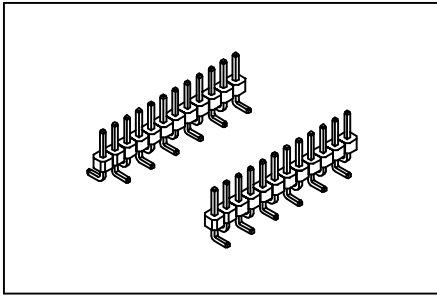


Pin Header 2.0mm(0.079")

GXCON



Material:

Housing: High temperature housing withstands IR and VPR soldering methods.

Contacts: Brass.

Plating: Gold plated over nickel.
Tin plated over nickel.

Electrical Characteristics:

Current Rating: 1 AMP.

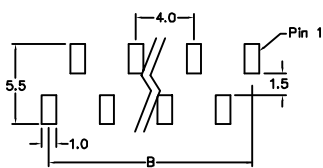
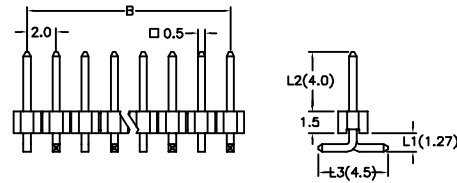
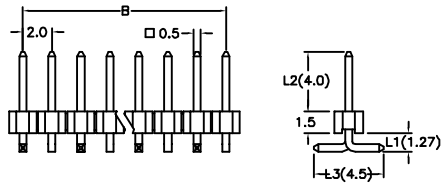
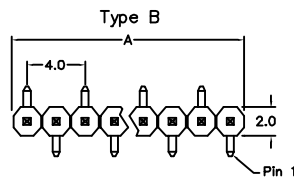
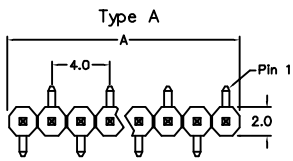
Insulator Resistance: 5000MΩ min. at DC 500V.

Contact Resistance: 20mΩ max. at DC 100mA.

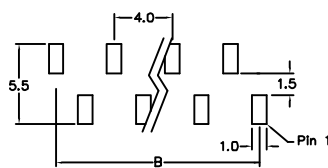
Operating Temperature: -65 °C ~ +125 °C.

Features:

- * Single row Surface Mount
- * Low profile insulator 1.50mm(0.059").
- * Two choices of foot print.
- * Custom design provides wide product flexibility.



P.C. Board Layout



P.C. Board Layout

Position	3 Thru 40
Dimension	
A	2.0 X No. of Positions
B	2.0 X No. of Positions - 2.0

Ordering information

PH15- 1 40 1 3 A /L1/L2/L3
 Series Single Row No. of Pin Per Row 1: Gold Plated 2: Tin Plated
 3: Surface Mount Foot Print Type A & B